

GREY BRUCE ISSUES AND LOCAL ACTIONS FOR HEALTH

ACCESSIBILITY

Allender, S., Gleeson, E., Crammond, B., Sacks, G., Lawrence, M., Peeters, A., et al. (2011). Policy Change to Create Supportive Environments for Physical Activity and Healthy Eating: which options are the most realistic for local governments? *Health Promotion International*, Vol.27 (No. 2), 261-274.

Clarke, M., Hillier, B., Janiec, H., Kaldeway, L., Leroux, J., Maher, T., et al. (2013, January). *Key Messages and Policy Recommendations for Access to Recreation*. Retrieved September 20, 2014, from Peterborough County City Health Unit: <http://www.keepandshare.com/doc/5702981/access-to-recreation-key-messages-ospapph-pdf-559k?da=y>

Government of Ontario. (2014, September). *Realizing Our Potential: Ontario's Poverty Reduction Strategy (2014-2019)*. Retrieved September 20, 2014, from Government of Ontario: <https://www.ontario.ca/home-and-community/realizing-our-potential-poverty-reduction-strategy-2014-2019>

AIR QUALITY

The Ontario Tobacco Research Unit. (2010, August 12). *Protection from Second Hand Smoke: Monitoring Update. OTRU Updates*. Retrieved September 20, 2014, from Ontario Tobacco Research Unit: http://otru.org/wp-content/uploads/2012/06/16mr_shs.pdf

U.S. Department of Health and Human Services. (2006). *The Health Consequences of Involuntary Exposure to Tobacco Smoke: A Report of the Surgeon General*. Retrieved September 20, 2014, from US Department of Health and Human Services: <http://www.surgeongeneral.gov/library/reports/secondhandsmoke/fullreport.pdf>

ALCOHOL

Barclay, M. (2012, September). *Reducing Alcohol Related Harms: Moving Towards a Culture of Moderation in Grey Bruce. A Call for Action*. Retrieved September 20, 2014, from Grey Bruce Health Unit: http://www.publichealthgreybruce.on.ca/injury/alcoholdrugs/Reducing_Alcohol_Related_Harms_Grey_Bruce_Position_Paper.pdf

Galloway, S. (2011, October). *Report on Alcohol Use in Peterborough City and County: Recommendations for a Healthier and Safer Community*. Retrieved September 20, 2014, from Peterborough City and County Health Unit: <http://www.pcchu.ca/wp-content/uploads/2011/09/Report-on-Alcohol-Use-October-2011.pdf>

National Alcohol Strategy Working Group. (2007, April). *Reducing Alcohol-Related Harm in Canada: Toward a Culture of Moderation, Recommendations for a National Alcohol Strategy*. Retrieved September 20, 2014, from Alberta Gaming and Liquor Commission: http://www.aglc.ca/pdf/social_responsibility/nationalalcoholstrategy.pdf

FLUORIDE

Wong, E. (2013, September). *The Real Cost of Removing Water Fluoridation; A Health Equity Impact Assessment*. Retrieved September 2014, from Wellesley Institute: <http://www.wellesleyinstitute.com/wp-content/uploads/2013/09/The-Real-Cost-of-Removing-Water-Fluoridation.pdf>

HEALTHY FOOD SYSTEMS

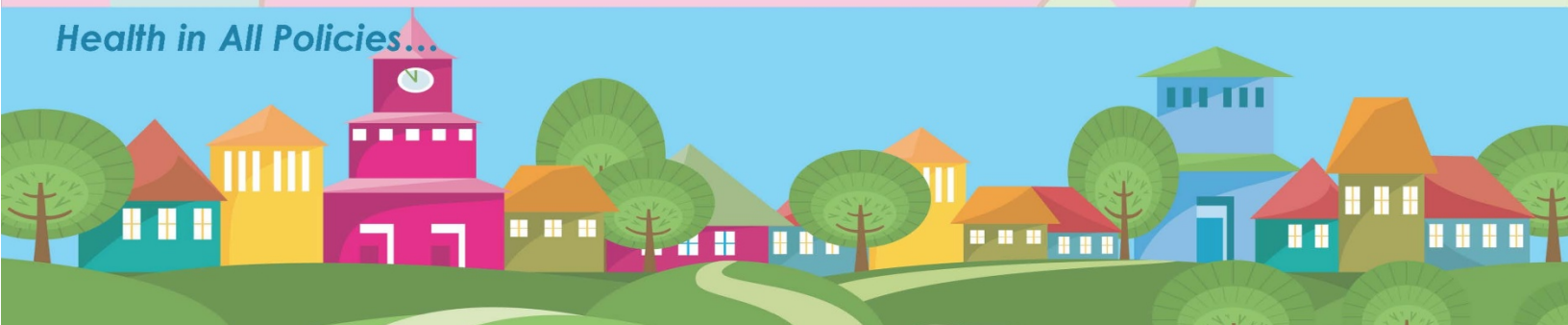
Bruce Grey Poverty Task Force. (n.d.). *Bruce Grey Food Charter*. Retrieved September 20, 2014, from Grey Bruce Health Unit: http://www.publichealthgreybruce.on.ca/Nutrition/Bruce_Grey_Food_Charter.pdf

Dietitians of Canada. (2013). *Community Food Security Position of Dietitians of Canada*. Retrieved September 20, 2014, from Dietitians of Canada: <http://www.dietitians.ca/Downloadable-Content/Public/cfs-position-paper.aspx>

North Bay Parry Sound Health Unit. (2013, December 9). *Food Charter – Discussion Paper*. Retrieved September 20, 2014, from North Bay Parry Sound Health Unit: http://www.myhealthunit.ca/en/resources/Food_Charter_Discussion_Paper_FINAL_Revised_March_13_2014.pdf

Ontario Society of Nutrition Professionals in Public Health. (2013). *Regarding a Consultation Paper on Ontario's Minimum Wage*. Retrieved September 20, 2014, from Ontario Society of Nutrition Professionals in Public Health: <http://osnpph.on.ca/resources/OSNPPH-Ontario-Minimum-Wage-Feedback-2013.pdf>

Health in All Policies...



GREY BRUCE ISSUES AND LOCAL ACTIONS FOR HEALTH

HEALTHY HOUSING

Bruce County. (2013, June). *Bruce County Long Term Housing Strategy Update: 2013-2023*. Retrieved September 20, 2014, from Bruce County: <http://www.brucecounty.on.ca/assets/files/Bruce%20County%20Long%20Term%20Housing%20Strategy%202013.pdf>

Wellesley Institute. (2012, March). *Housing and Health: Examining the Links*. Retrieved September 20, 2014, from Wellesley Institute: http://www.wellesleyinstitute.com/wp-content/uploads/2010/08/Precarious_Housing_In_Canada.pdf

Lewchuck W, L. M. (2013, February). *It's More than Poverty Employment Precarity and Household Well-being*. (S. McBeth, Ed.) Retrieved September 20, 2014, from United Way Toronto: <http://www.unitedwaytoronto.com/document.doc?id=90>

HEALTHY TRANSPORTATION SYSTEMS

Aitken, T., Cranny, J., Ferguson, C., Middleton, B., & Graham, R. (2009, December 23). *Building Healthy Communities Together: Active and alternative transportation to support healthy living in Grey Bruce*. Retrieved September 20, 2014, from Grey Bruce Health Unit: http://www.publichealthgreybruce.on.ca/Healthy_Communities/Attachments/Active%20Alternative%20Transportation%20to%20Support%20Healthy%20Living%20in%20Grey%20Bruce.pdf

Grey Bruce Health Unit. (2014). Grey Bruce Healthy Community Picture - 2014 Supplement. Owen Sound: Grey Bruce Health Unit.

HEALTH IN ALL POLICIES

Australia, P. H. (Ed.). (2010, July). *Public Health Bulletin SA Health in All Policies*. Retrieved September 20, 2014, from Government of South Australia: <http://www.health.sa.gov.au/pehs/publications/publichealthbulletin-pehs-sahealth-1007.pdf>

Freiler, A., Muntaner, C., Shankardass, K., Mah, C. L., Molnar, A., Renahy, E., et al. (2013). Glossary for the implementation of Health in All Policies (HiAP). *Journal of Epidemiology Community Health*, 67, 1068-1072.

Kretzman, J. P., & McKnight, J. L. (1993). *Building Communities from the Inside Out: A Path Towards Finding and Mobilizing a Community's Assets*. Chicago, IL: ACTA Publications.

Leppo, K., Ollila, E., Pena, S., Wismas, M., & Cook, S. (Eds.). (2013). *Health in All Policies; Seizing opportunities, implementing policies*. Finland: Ministry of Social Affairs and Health.

McQueen, D. V., Wismar, M., Lin, V., Jones, C. M., & Davies, M. (n.d.). *Intersectoral Governance for Health in All Policies*. Retrieved from WHO/Europe: http://www.euro.who.int/__data/assets/pdf_file/0005/171707/Intersectoral-governance-for-health-in-all-policies.pdf

Policy, H. P. (2011). *A Literature Review of Collaborative Mechanisms and Healthy Public Policy Advocacy*. Alberta Health Services.

SDH. (2013, June). Health in All Policies Definition Consultation. Retrieved September 10, 2014, from Action:SDH: http://www.actionsdh.org/Contents/Action/Governance/Building_governance/Health_in_All_Policies_Definition_Consultation.aspx

INCOME AND SECURITY

Dobbins, F. (2014, August). Living Wage Bruce Grey. The United Way of Bruce Grey. Owen Sound, Ontario.

Mikkonen, J., & Raphael, D. (2010). *Social Determinants of Health: The Canadian Facts*. Toronto, Ontario, Canada: York University School of Health Policy and Management.

Statistics Canada. (2014, March 21). *Health Profile, December 2013*. Retrieved September 20, 2014, from Government of Canada: <http://www12.statcan.gc.ca/health-sante/82-228/details/page.cfm?Lang=E&Tab=1&Geo1=HR&Code1=3533&Geo2=PR&Code2=01&Data=Rate&SearchText=grey%20bruce&SearchType=Contains&SearchPR=01&B1=All&Custom=&B2=All&B3=All>

Health in All Policies...

