

Welcome to the inaugural newsletter designed to keep Home Takeover advisory members informed and engaged!

As we continue our collective efforts to address the community issue of home takeover, this newsletter is intended to share:

- Project updates
- Research insights
- Networking opportunities
- Outcomes and impacts
- Upcoming events
- Calls for participation
- Community highlights
- Resources

## DATA COLLECTION UPDATE

The Data Collection Working Group continues to seek opportunities to enhance understanding of home takeovers using data sources and identified indicators. Here are a few updates:

- Using a population health approach, a list of indicators has been developed that can be used by organizations to identify data they can collect and share to help understand the prevalence, impact, and location of home takeovers in Grey-Bruce.
- A few organizations have already integrated at least one indicator into their existing data sources and systems (i.e., number of calls/consults/visits, type of housing, etc.).
- Some organizations may face challenges including the availability, quality, and integration of data. Nonetheless, identifying existing data, or adding a field to collect new data, has value for this collaborative effort.
- There is potential for duplication of data collection related to incidences and responses of a home takeover. Adding a field for “Is this a referral from another agency?” may help to identify duplicate cases.
- Please reach out if you think your organization has the capacity to collect data for home takeover.

Next data collection meeting: May 6th, 2024, 1-2 p.m. (virtual)

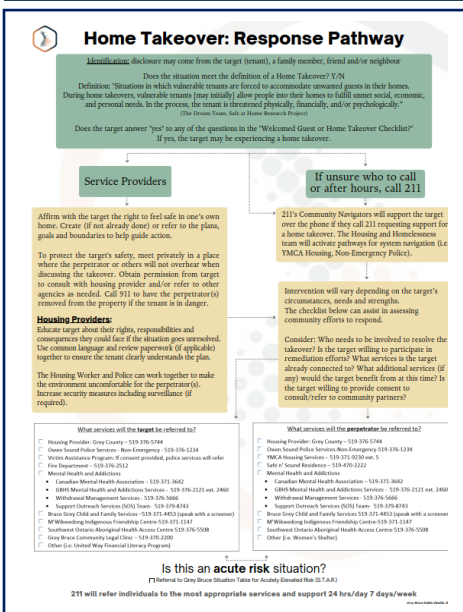
Meetings occur every 3-4 months.

## HOME TAKEOVER: RESPONSE PATHWAY HAS BEEN UPDATED

The Response Pathway has been updated to include the Situation Table for Acutely Elevated Risk (S.T.A.R) as an intervention. A service provider would refer to S.T.A.R if all other intervention efforts have been unsuccessful and the home takeover situation meets the criteria for acute elevated risk. The S.T.A.R referral form includes several risk factors that align with individuals experiencing a home takeover.

The Response Pathway and S.T.A.R Infographic is available at:

[Home Takeover \(publichealthgreybruce.on.ca\)](https://publichealthgreybruce.on.ca)



## OLDER ADULTS AT RISK

Home Takeover is a form of elder abuse and can increase the vulnerability of older adults to other types of abuse. A local project is underway that addresses the risks of elder abuse. The project is led by the Grey Bruce Elder Abuse Prevention Network (GBEAPN) and aims to increase awareness and build community capacity to reduce the incidence of elder abuse. Older adults have been attending educational sessions throughout Grey-Bruce to learn about the risks, identification, and response to elder abuse. As part of the educational program, called "[It's Not Right](#)", participants learn about the issue and impacts of home takeover. Older adults can be targeted and are especially vulnerable to victimization through financial exploitation. The Grey Bruce Community Legal Clinic provides public education upon request about legal issues relevant to protecting older adults from abuse, such as tenant rights and powers of attorney. For more information about the Elder Abuse Prevention Project or GBEAPN, contact Angela Yenssen at [angela.yenssen@gbclc.clcj.ca](mailto:angela.yenssen@gbclc.clcj.ca)



*It's Not Right Session in Mildmay,  
March 27, 2024*

## NETWORKING OPPORTUNITIES

- A Home Takeover presentation will be delivered to the Community Safety and Well-Being Advisory Committee on June 7<sup>th</sup>.
- *Home Takeover: A Collaborative Approach to Address an Emerging Issue in Community Housing* will be presented at the [2024 Community Health Nurses of Canada \(CHNC\) Conference](#), set for April 22-24, at the *University of Toronto*. The presentation will highlight an evidence-informed approach to the development, implementation, and evaluation of the home takeover project through intersectoral collaboration.

---

## HOW FAMILIAR ARE YOU WITH THE HOME TAKEOVER RESPONSE FRAMEWORK?

*In 2023, a survey was conducted with stakeholders in the Public Safety, Healthcare, Human Services, and Community-Based or Non-Profit Organizations sectors. Survey results revealed that **63%** of respondents were familiar with the [Response Framework for Organizations and Service Providers \(2022\)](#).*

Interestingly, of respondents who were *not* familiar with the framework, most were frontline staff working directly with the clients served by their organization. In contrast, nearly all respondents in a supervisory or management type role (overseeing staff who work with clients) *were* familiar with the framework.

Click here to read the full [Community Partner Survey Results Summary \(2023\)](#).

*If you have any feedback, questions, or something you would like to share in the newsletter, please contact Lisa Alquire at [l.alquire@publichealthgreybruce.on.ca](mailto:l.alquire@publichealthgreybruce.on.ca)*