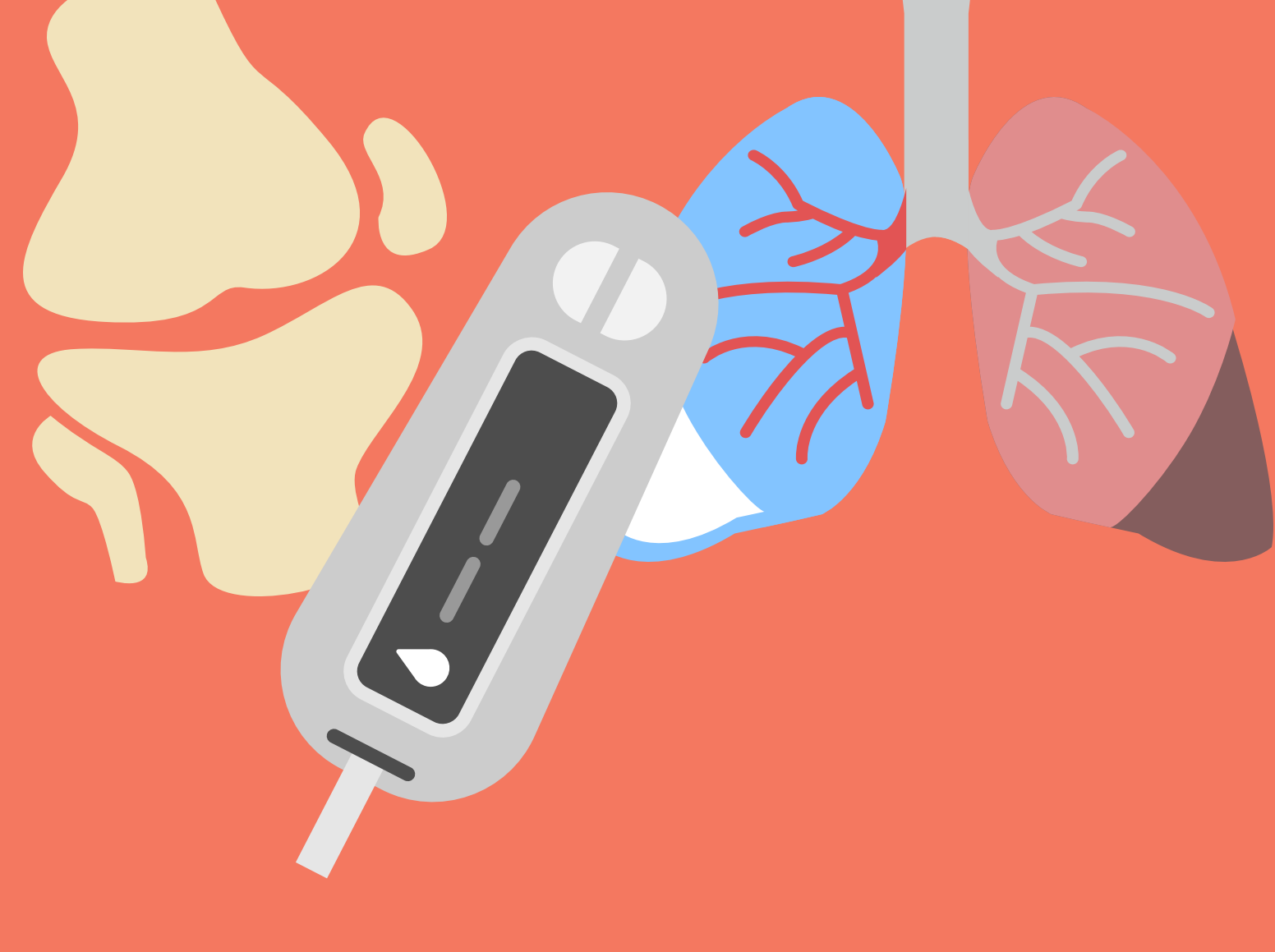


# CHRONIC CONDITIONS IN GREY BRUCE

HOW DO WE COMPARE TO ONTARIO?



33%

OF GREY BRUCE ADULTS ARE OBESE



## ADULT OBESITY

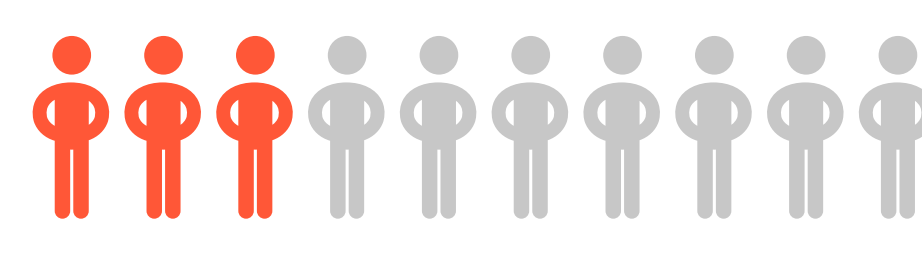
Adults in Grey Bruce are more likely than in Ontario to be obese. This is also true of Grey Bruce residents aged 35 to 49, when compared to Ontarians in that age group.

## OVERWEIGHT AND OBESITY AMONG YOUTH

Children and youth aged 12 to 17 in Grey Bruce and Ontario are similarly likely to be overweight or obese.

28%

OF CHILDREN AND YOUTH IN GREY BRUCE ARE OVERWEIGHT OR OBESE\*



28%

OF GREY BRUCE RESIDENTS HAVE ARTHRITIS



## ARTHRITIS

Overall, Grey Bruce residents are more likely than Ontarians to have arthritis. This is likely due to our population being older relative to Ontario.

## DIABETES

Grey Bruce residents and Ontarians are similarly likely to have diabetes.

9%

OF GREY BRUCE RESIDENTS HAVE DIABETES



11%

OF GREY BRUCE RESIDENTS HAVE ASTHMA



## ASTHMA

Grey Bruce residents and Ontarians are similarly likely to have asthma.

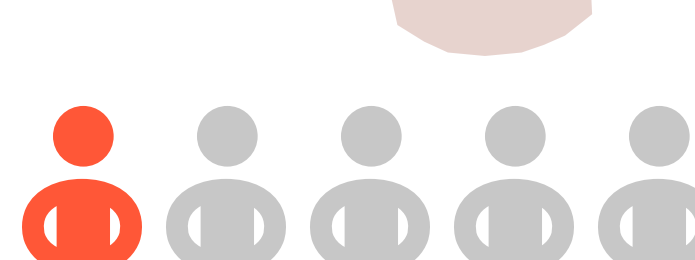
## HIGH BLOOD PRESSURE

Grey Bruce residents and Ontarians are similarly likely to have high blood pressure.

Grey Bruce residents aged 65 and older, however, are less likely to have high blood pressure than Ontarians in the same age group.

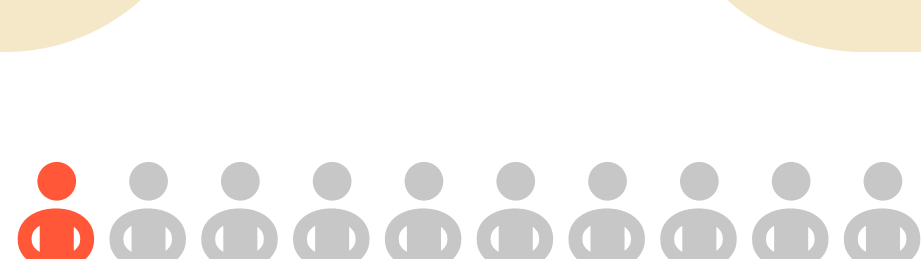
21%

OF GREY BRUCE RESIDENTS HAVE HIGH BLOOD PRESSURE



7%

OF GREY BRUCE RESIDENTS HAVE A CHRONIC LUNG CONDITION\*



## CHRONIC LUNG CONDITIONS

Grey Bruce residents and Ontarians are similarly likely to have a chronic lung condition such as chronic bronchitis, emphysema or chronic obstructive pulmonary disease.

## SUMMARY



High rates of arthritis due to older population



High rates of obesity among adults

NOTES:

1. \* Interpret this estimate with caution due to small sample size. Small sample sizes can cause unreliable estimates.

2. The following local estimates were not reported due to small sample size, or not measured for some age groups and could not be compared to Ontario:

All chronic disease indicators except youth overweight/obesity among 12 to 17 year-olds

Arthritis, diabetes, hypertension, and chronic lung conditions among 18 to 34 year-olds

Diabetes and chronic lung conditions among 35 to 49 year-olds

3. Data source: Canadian Community Health Survey, 2015-16

4. Inhaler icon by Smashicons at flaticon.com

