

SELF-RATED HEALTH

60%

OF GREY BRUCE RESIDENTS
RATE THEIR HEALTH AS
VERY GOOD OR EXCELLENT



VERY GOOD OR EXCELLENT HEALTH

Overall, Grey Bruce residents and Ontarians are similarly likely to rate their overall health as very good or excellent.

Grey Bruce residents aged 65+ are more likely than Ontarians in the same age group to report very good or excellent health.

FAIR OR POOR HEALTH

Grey Bruce residents and Ontarians are similarly likely to rate their health as fair or poor.

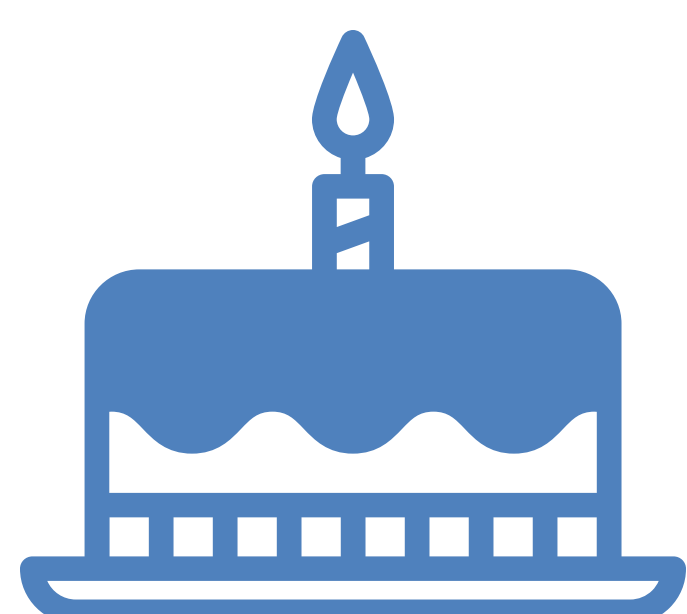
Grey Bruce residents aged 50 to 64 are more likely to describe their health as fair or poor than Ontarians in that age group.

14%

OF GREY BRUCE RESIDENTS
RATE THEIR HEALTH AS FAIR OR POOR



18 TO 34



68%

50 TO 64



50%

50 TO 64 YEAR-OLDS AT RISK

Only half of Grey Bruce residents aged 50 to 64 report very good to excellent health, making them less likely than 18 to 34 year-olds to do so.

NOTES:

1. The following local estimates were suppressed due to small sample size and could not be compared to Ontario: Fair or poor self-rated health among 12 to 17 and 18 to 34 year-olds

2. Data source: Canadian Community Health Survey, 2015-16