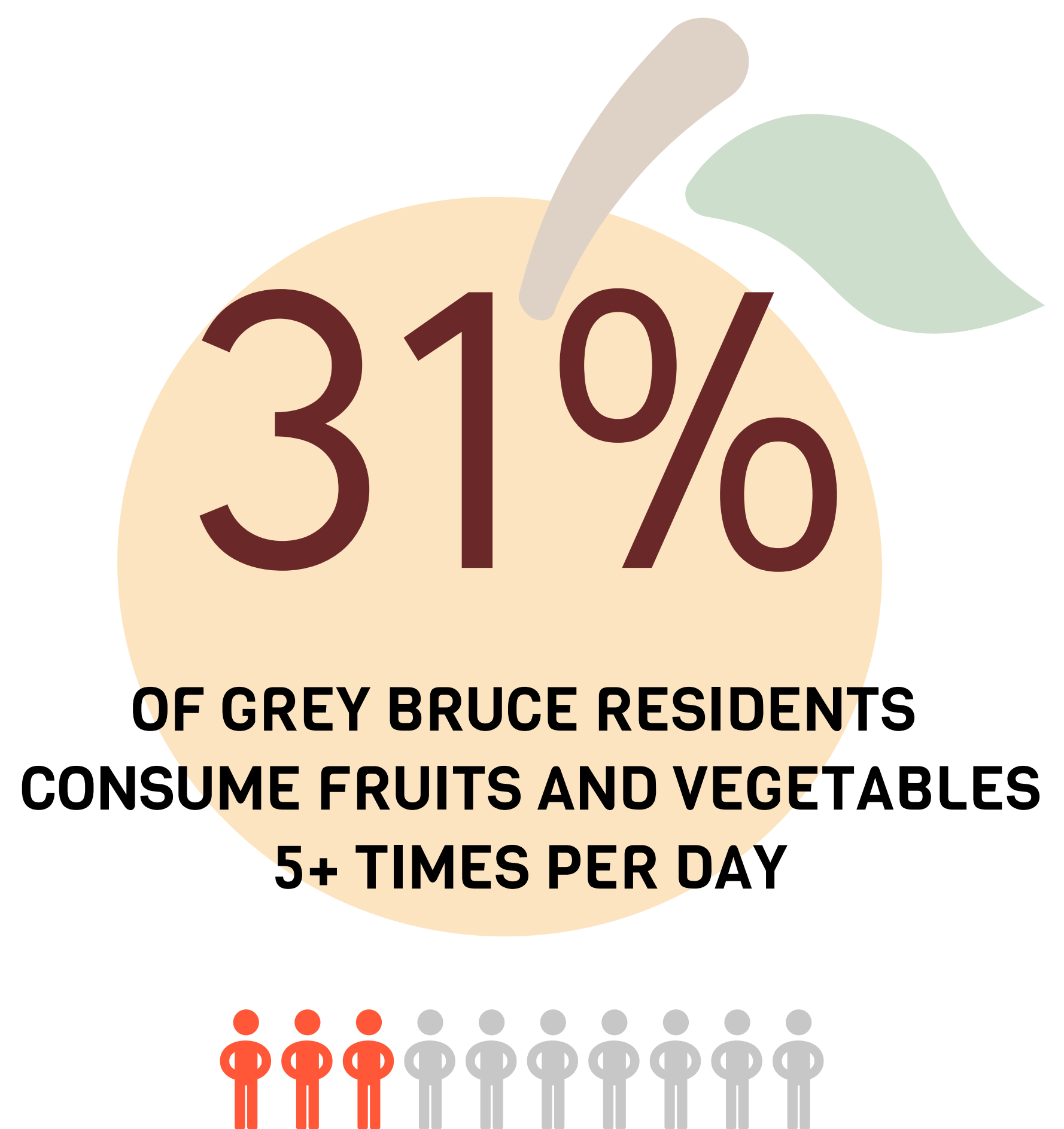


FRUIT AND VEGETABLE CONSUMPTION

LOCAL RATES SIMILAR TO ONTARIO RATES

Overall, Grey Bruce residents and Ontarians are similarly likely to consume fruits and vegetables five or more times per day.

Grey Bruce residents aged 65+ were more likely than Ontarians in that age group to do so.



50 TO 64



23%

65+



37%

LOW CONSUMPTION AMONG 50 TO 64 YEAR-OLDS

Fruit and vegetable consumption was higher among Grey Bruce residents aged 65 and older than among those aged 50 to 64.